

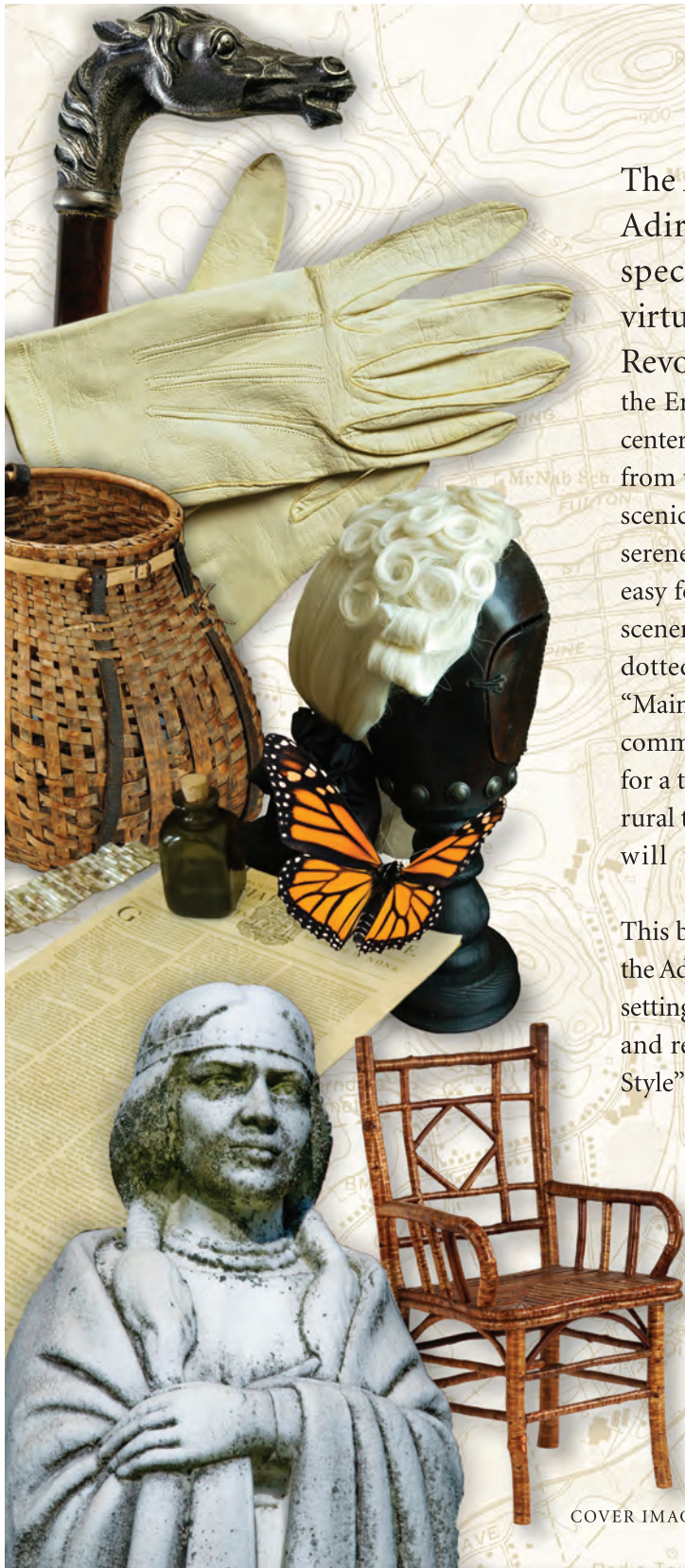
# Scenic Byways

ADIRONDACK NORTH COUNTRY



*THIS PUBLICATION HAS BEEN REFORMATTED from its original printed version so that you can print it on 8.5 in x 11 in paper. If you would like a copy of the original brochure, please contact one of the area's tourism offices.*





The Adirondack Trail Scenic Byway passes through the Adirondack North Country wilderness, traversing spectacular natural landscapes, many of which are virtually the same as those of Colonial America and the Revolutionary War eras. Beginning in the Village of Fonda on the Erie Canal in the Mohawk Valley, the Byway travels through the center of the Adirondack Park and continues north to Malone 10 miles from the border with Canada. We invite you to tour the 188-miles of scenic roads through protected forest lands and along shorelines of serene lakes and ponds. The Adirondack Trail Scenic Byway makes it easy for visitors to “escape to the wilderness” and view awe-inspiring scenery. The majestic Adirondack Mountains and rolling foothills are dotted with small communities featuring quaint town centers, real “Main Streets,” and historic architecture. The charm of the picturesque communities interwoven with the wildness of the forestlands makes for a truly remarkable setting. Come and meet the friendly residents in rural towns who take pride in their rich history and local customs who will welcome you with authentic Adirondack hospitality.

This brochure introduces you to the places nestled in and just outside the Adirondack Park which visitors describe as a “magnificent wilderness setting.” The Adirondack Trail Scenic Byway and its many communities and resources will take you to the places where the real “Adirondack Style” of living began.

## Scenic & Byways ADIRONDACK NORTH COUNTRY

Visit our website at [www.adirondackscenicbyways.org](http://www.adirondackscenicbyways.org) to learn more about the communities and adventures you’ll find along the Adirondack Trail and other North Country Scenic Byways.

COVER IMAGE Adirondack Museum in Blue Mountain Lake



## Items of Interest

### The Amazing Adirondack Park

The Adirondack Park is different than any other designated park in the U.S. and possibly in the world. Larger than Yellowstone and Yosemite National Parks, there is no fee to enter the Park; there are no gates at the entrances. New York State owns 2.6 million acres of the Park's 6 million acres. Nine Scenic Byways traverse the Park. The diverse mixture of forest areas, mountain landscapes, watersheds, and vacation resorts provide enjoyment for all. Byway communities are gateways to vast recreational opportunities.

### Nature and Wildlife Viewing (Fresh Air and Relaxation)

Bring your camera and binoculars... Picturesque views of lakes, rivers, and forests along with panoramas of mountain peaks and valleys create scenery unrivaled in the Northeast. As you tour the distinctive unspoiled geographic areas, you will experience the tangible and spiritual benefits of being in nature.

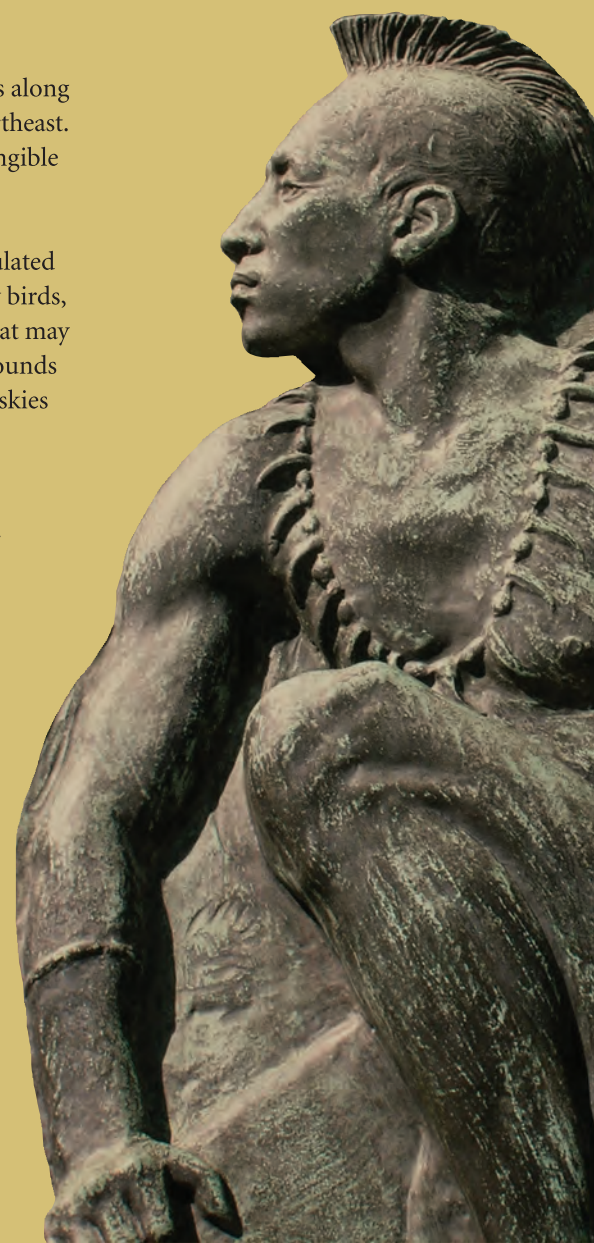
Access rare landscapes including boreal bogs, wetlands, and open grasslands populated with ecosystems of fish, wildlife, rare plants, and other flora and fauna. Migratory birds, deer, moose, fish, fox, bear, otters, beavers and mink are just some of the wildlife that may be seen along the wilderness corridor and trails. In quiet surroundings hear the sounds of many species from spring peepers to tree frogs to Bicknell's Thrush. The night skies are clear enough for star gazing and spotting constellations.

### Experiences for the Four Seasons

Whether your passion is history, culture, or outdoor recreation, the Byway is your destination. Journey back in time at historic sites and museums. Take in the architecture as you pass by Adirondack rustic lodges, Great Camps, cabins and period buildings. Be ready for bicycling, mountain biking, hiking, fishing, bouldering and camping during mild spring and fall days. Canoe, kayak, or swim in crystal waters on the warm summer days. Meet farmers at local markets. Taste local berries, herbs, fish, and maple syrup, and see craft demonstrations by artisans at annual fairs and shows. View the fantastic foliage colors during autumn visits. In winter try snowshoeing, cross-country or downhill skiing, ice-fishing, ice-skating, or ice-climbing.

Native Americans were the first inhabitants of the land throughout the valley named for the Mohawk. As original members of the Iroquois League, or Haudenosaunee, they were known as the "Keepers of the Eastern Door," and guarded the Iroquois Confederation against invasion.

Visit the Blessed Kateri Tekakwitha Shrine to the Mohawk maiden near Fonda and Johnson Hall in Johnstown where both Colonial and Native American cultures intertwined.



# Land Trails and Waterways

## HIKING TRAILS

*For more information on hiking Adirondack trails, visit the Adirondack Mountain Club's website at [www.adk.org/explore\\_park/Hike\\_Ideas.aspx](http://www.adk.org/explore_park/Hike_Ideas.aspx) and the NYS Dept. of Environmental Conservation website <http://www.dec.ny.gov/outdoor/351.html>*

**Chimney Mountain**—Ascent: 760 feet; Trail to the Summit: 1.1; Chimney Mountain is southeast of Indian Lake. Turn east off of Route 30 just south of Indian Lake and follow across Lake Abanakee south to Big Brook Road. The trailhead is beyond the private parking lot at the end of Big Brook Road. Use caution when entering caves along the way. Stay out of deep ones. Excellent view of wilderness from stone look-out at top.

**Sawyer Mountain**—Ascent: 630 feet; Trail to the Summit: 1.1 miles. This is a very popular climb in the Indian Lake area of the central Adirondacks. The large trailhead parking area is located approximately 4 miles north of Indian Lake on Route 28/30. A short hike of moderate difficulty brings a prized view.

**Historic Coney Mountain**—Trail to the Summit: .7 mile. This short bushwhack begins where the Franklin-Hamilton county line crosses NYS Route 30 south of Tupper Lake. A moderate trail, it is easy enough for beginners and the summit offers full panoramic views in all directions. Travel south along NYS Route 30 until you see the county line marker. Park in the paved area of the snowplow turnaround. Across the road, hidden just inside the forest cover is a low utility pole with a large transformer marking the beginning of the trail.

**Jenkins Mountain**—Trail to the Summit: 4.1 miles. This 8.2-mile round-trip is accessed from the Paul Smiths VIC and is designed for those looking for a day hike and a summit with views. Elevation: 2,514 feet.

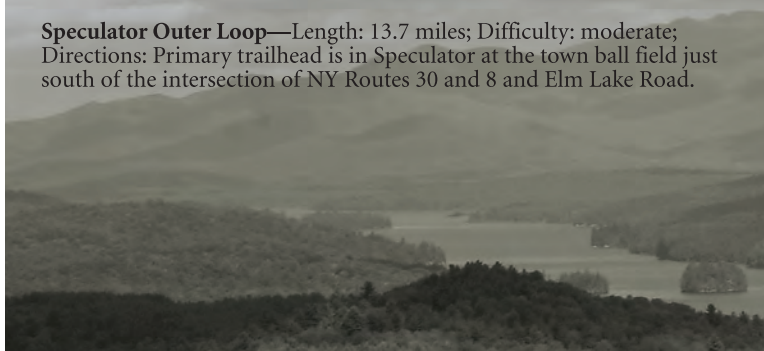
**Debar Mountain**—Trail offers broad distant views of surrounding mountains and lakes from the 3,300 foot summit. Entry on Route 30 in the Town of Duane.

## MOUNTAIN BIKING TRAILS

*For more detailed information on these and other trails, visit the Adirondack mountain biking atlas at <http://www.bikeadirondacks.org>*

**Speculator Inner Loop via Kunjamuk Cave**—Length: 7.2 miles; Difficulty: advanced; Directions: Primary trailhead is in Speculator at the town ball field just south of the intersection of NY Routes 30 and 8 and Elm Lake Road.

**Speculator Outer Loop**—Length: 13.7 miles; Difficulty: moderate; Directions: Primary trailhead is in Speculator at the town ball field just south of the intersection of NY Routes 30 and 8 and Elm Lake Road.



## New York State Campgrounds

**Indian Lake to Rock Lake**—Length: 5.0 miles; Difficulty: moderate; Directions: Follow multi-use trail from Village of Indian Lake. Turn onto Pelon Road, take left fork in the road. Follow to Cedar River and pick up trail to Rock Lake.

**Lake Clear to Paul Smiths VIC**—Length: 9.0 miles; Difficulty: easy; Directions: From intersection of NY Routes 186 and 30 in Lake Clear Junction, take Route 30 north about 1/2 mile to access the Jack Rabbit Trail. Park opposite the Lake Clear School near dirt road on the right.

**Grass Pond**—Length: 2.0 miles; Difficulty: easy; Directions: Travel north 3.7 miles on Route 30 from the junction of NY Routes 30 and 86 at Paul Smith's College. Turn right at sign for Hays Brook Assembly Area and go about 0.4 miles on a dirt road to the trailhead and parking.

### NEW YORK STATE FISHING ACCESS & BOAT LAUNCHES

For more information visit the NYS Department of Environmental Conservation (DEC) website at <http://www.dec.ny.gov/outdoor/349.html>  
**Stop the spread of invasive species. Inspect, clean and dry your boat.**

(See Map  icons)

- 1 Great Sacandaga Lake Northampton—1-1/2 miles south of Northville
- 2 Great Sacandaga Lake Northville—in Northville
- 3 Sacandaga Lake\*—4 miles west of Speculator
- 4 Lewey Lake\*—12 miles north of Speculator
- 5 Indian Lake Islands\*—12 miles north of Speculator
- 6 Lake Durant\*—3 miles east of Hamlet of Blue Mountain Lake
- 7 Forked Lake\*—5 miles southwest of Hamlet of Long Lake
- 8 Long Lake—in Hamlet of Long Lake
- 9 Lake Eaton\*—2 miles west of Hamlet of Long Lake
- 10 Tupper Lake—2 miles south of Village of Tupper Lake
- 11 Raquette River—4 miles east of Village of Tupper Lake
- 12 Fish Creek Pond\*—11 miles northeast of Village of Tupper Lake
- 13 Rollins Pond\*—12 miles northeast of Village of Tupper Lake
- 14 Follensby Clear Pond—2 miles south of Saranac Inn
- 15 Little Clear Pond—3-1/2 miles southwest of Lake Clear Junction
- 16 Meacham Lake\*—9.5 miles north of Paul Smiths

\* Camping available

For more information and to access an online reservation system, visit the NYS Department of Environmental Conservation (DEC) website at <http://dec-campgrounds.com>. **Stop the spread of destructive forest insects. It is illegal to move uncertified firewood more than 50-miles in New York State ([www.adkinvasives.com](http://www.adkinvasives.com))**

(See Map  icons)

1 Great Sacandaga Lake Northampton Beach  
328 Houseman Street  
Mayfield  
(518) 863-6000  
(518) 863-4545

2 Great Sacandaga Lake  
Route 30  
Northville  
(518) 924-4121  
(518) 863-4545

3 Sacandaga  
Route 30  
3 miles south of Wells  
(518) 924-4121  
(518) 863-4545

4 Moffitt Beach  
Page Street  
Speculator  
(518) 548-7102  
(518) 863-4545

5 Lewey Lake  
Route 30  
Sabael South of Indian Lake  
(518) 648-5266  
(518) 648-5616

6 Lake Durant  
Routes 28 & 30  
Blue Mountain Lake  
(518) 352-7797  
(518) 648-5616

7 Forked Lake  
381 Forked Lake Campsite Lane  
Long Lake  
(518) 624-6646  
(518) 648-5616

8 Lake Eaton  
Route 30  
Long Lake  
(518) 624-2641  
(518) 897-1309

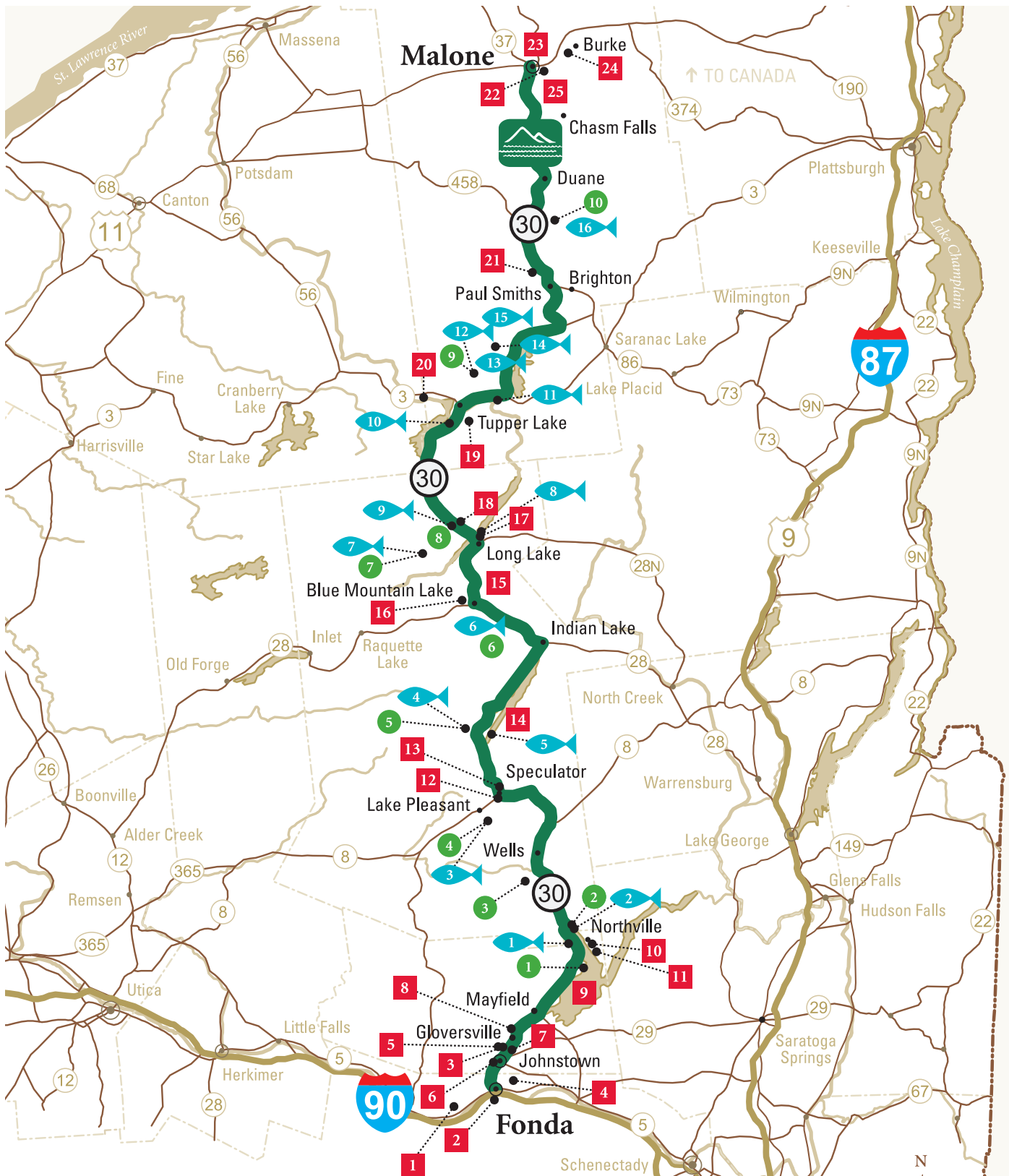
9 Fish Creek Pond  
4523 State Route 30  
Saranac Lake  
(518) 891-4560  
(518) 897-1309

10 Meacham Lake  
119 State Campsite Road  
Duane  
(518) 483-5116  
(518) 897-1309

Aerial view of Long Lake







## Adirondack Trail Scenic Byway

Planning your next trip? Visit [www.adirondackscenicbyways.org](http://www.adirondackscenicbyways.org)

-  Campgrounds
-  Fishing Access & Boat Launches



**Albany** 



1

### The Kateri Tekakwitha Shrine

The Kateri Shrine and Indian Museum  
3636 Route 5  
Fonda, NY  
(518) 853-3646  
www.katerishrine.com



The Mohawk maiden, Blessed Kateri Tekakwitha lived much of her life in the village of Caughnawaga, known as Fonda today. The site is the only completely excavated Iroquois Indian village in the country. This Mohawk Valley attraction includes beautiful chapels, an archeological dig, woodland trails, picnic grove, Native American museum, and buildings dating to 1783.

Open daily May 1 - October 31, 10 a.m. - 4 p.m.

2

### Old County Court House

9 Park Street  
Fonda, NY  
518-853-8187  
www.co.montgomery.ny.us/historian



The Old County Court House was built in 1863 and is now listed on the National Register of Historic Places. The impressive Greek Revival structure was constructed in true Ionic style and is one of the finest genealogical facilities in New York State. Researchers from all over the country access church, census, military, cemetery, and vital records along with histories of surrounding counties from the collections.

Call for tour time and hours for Montgomery County's Department of History and Archives.

3

### Green Street Cemetery

West Green Street  
Johnstown, NY



Located on West Green Street, just east of the Drumm House, the cemetery is the resting place of many Revolutionary notables. It is the burial site of Jan Baptiste Vaumain de Fon Claire, an officer in the army of France during the reign of Louis XVI. Ann Sarah Irving, a sister of Washington Irving, and Major General Richard Dodge are also buried here.

4

### Little Red School House

112 Old Johnstown Road  
Fonda, NY  
(518) 853-4415



The pre-1870, one-room schoolhouse will "Take you back in time to school days of long ago." The wooden desks are original and the historic bell and furnishings, including artifacts and memorabilia, were collected from surrounding country schools.

Open by appointment.

5

### Drumm House

West Green Street  
Johnstown, NY  
(518) 762-7419  
www.cityofjohnstown-ny.com



This late 1760's colonial structure is thought to be one of Sir William Johnson's cottages. Standing as one of the city's oldest dwellings, it has been restored to its original design with period furnishings. Only a short walking distance from the Drumm House is the Johnstown Historical Society and its museum on North William Street.

Johnstown Historical Society open Memorial Day to Labor Day, Sat. & Sun. 1-4 p.m. or by appointment. Drumm House hours by appointment.

6

### Johnson Hall

Hall Avenue  
Johnstown, NY  
518-762-8712  
www.nysparks.state.ny.us/sites/info.asp?siteID=17



Johnson Hall was the 1763 Georgian home of Sir William Johnson. Johnson contracted with Boston trained carpenter Samuel Fuller to build a house of wood cut to look like stone to reflect his prestigious position and titles of baronet and Superintendent of Indian Affairs for nations west of the Ohio River. Johnson Hall became the nucleus of a large working estate, built to encourage settlement and land development. Visitors can walk the grounds and gardens, then tour the house and historic exhibits at this National Historic Landmark.

Open May thru September, Thurs. – Sun. 10 a.m. - 5 p.m.; closed Mon. - Wed. Also open Memorial Day, Independence Day and Labor Day. Call for specific hours.

*Note: Before your visit call ahead to confirm hours of operation for Byway attractions.*

7

**F, J, and G Rail Trail**  
Johnstown and Gloversville  
(800) 676-3858  
<http://www.44lakes.com/pdfs/FJ&GRailTrail.pdf>



The multi-use recreation trail follows the old Fonda, Johnstown, and Gloversville railroad bed. Visitors can walk, jog, bike, rollerblade or cross-country ski along the eight-mile, paved, scenic trail. Handicapped accessible. Tourism information and bathroom facilities are available nearby. Download helpful brochure at web address entered above.

Parking is available in Johnstown and in Gloversville.

8

**The Glove Theatre**  
42 North Main Street  
Gloversville, NY  
(518) 773-8255 [www.glovetheatre.org/museum](http://www.glovetheatre.org/museum)



The Glove Performing Arts Center and Museum is a multi-venue facility and is the center of the region's cultural life, providing entertainment and education. "The Glove" was the first and favorite in the vast Schine Theater empire. Built in 1914 the facility has been restored to its golden era when it presented opera, vaudeville, and orchestral concerts. Today, a dedicated not-for-profit continues the tradition with music, comedy, family shows and holiday events. Note: Legendary Hollywood producer Samuel Goldwyn went from glove maker to salesman for the Elite Glove Company in Gloversville prior to his entry to the movie industry.

9

**Great Sacandaga Lake**  
Mayfield to Northville, NY  
[www.dec.ny.gov/outdoor/32533.html](http://www.dec.ny.gov/outdoor/32533.html)

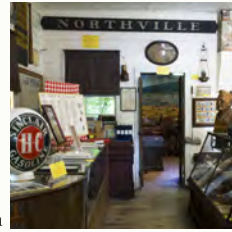


Nestled in the foothills of the Adirondack Park, the Sacandaga Valley was originally home to Mohawk Indians. Sir William Johnson settled the Valley in the 1700's. By the 1920's the Valley had become a famous vacation destination with its own amusement park. To address the threat of spring flooding from the Sacandaga and Hudson Rivers, the Conklingville Dam was constructed and water filled the great valley creating the lake. Today the beautiful 29-mile long Great Sacandaga Lake can be accessed by the public via boat launches, beaches, fishing sites, and campgrounds.

10

**Northampton Historical Society Museum**

South Main Street  
Northville, NY  
518-863-2628  
[cramergm@roadrunner.com](mailto:cramergm@roadrunner.com)



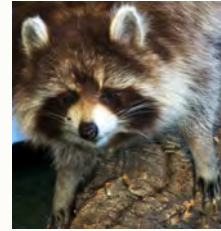
The Northville Northampton Historical Museum exhibits old photographs and local artifacts which interpret the life and history of the Village and Town.

The Historical Society Museum is open 10 a.m. 2 p.m. Wed. and Sat. in July and August; by appointment in June, Sept. and Oct.

11

**The Paul Bradt Museum**

518-863-4040  
South Main Street  
Northville, NY  
[cramergm@roadrunner.com](mailto:cramergm@roadrunner.com)



The Bradt Museum collections include wildlife and hunting displays, antique tools, rustic furniture and lamps, and a variety of artifacts. A reconstructed room from the Adirondack Cabin of Ira Grey is also on display. Use the parking lot at Town Hall for both sites.

The Bradt Museum is open 8:30 a.m. 3:30 p.m. weekdays and the first Sat. of each month.

12

**French Louie's Gravesite**

Routes 30 & 8  
Speculator, NY  
(518) 548-4521  
[www.frenchlouie.com](http://www.frenchlouie.com)



Louis Seymour, better known as "Adirondack French Louie" from the 1952 book "Adirondack French Louie—Early Life in the North Woods," has captured the imagination of generations of visitors to the Adirondack Mountains. If you would like to pay your respects, his grave is about mid-way along the Anchor fence to the right of Charlie Johns store at the four corners on NYS Route 30 [Elm Lake Road] across from the village hall. The stone is rather small so be on the lookout.



13

### Sacandaga River Pathway

Route 30  
Speculator, NY  
(518) 548-4521



The Sacandaga Pathway winds through a variety of wetland and upland forest areas along the river. Relax and take in the sights and sounds of nature along the path and series of elevated boardwalks which are wheelchair and stroller accessible.

Interpretive signage introduces visitors to a variety of wildlife and plant species and explains the history of early life and industry in the area.

The path begins to the left of the Community Park Pavilion on Route 30 by the four corners in Speculator.

14

### Northern Forest Canoe Trail

(802) 496-2285  
www.NorthernForestCanoeTrail.org

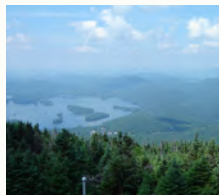


A paddler can access the Raquette River at several launch sites in Long Lake and the Village of Tupper Lake all of which are located directly on Route 30. Follow the historic water route of Iroquois trappers in their birch bark canoes and the path of historic log drives. The 740-mile canoe trail passes through the northern forests of New York, Vermont, Quebec, New Hampshire and Maine. The 147-mile New York section travels across some of the most scenic paddling in the Northeast.

15

### Blue Mountain Fire Observation Tower

State Route 30  
Blue Mountain Lake, NY  
www.dec.ny.gov/outdoor/9200.html



Blue Mountain is home to one of the few remaining fire towers in the Adirondack mountains. Hike a 2-mile trail with a 1,550 foot gain to the top. The historic fire tower has been preserved and provides panoramic views of surrounding peaks.

Located north of the Adirondack Museum on Route 30 in Blue Mountain Lake.

16

### Adirondack Museum

State Route 30  
Blue Mountain Lake, NY  
(518) 352-7311  
www.adirondackmuseum.org



The regional museum's collections of historic artifacts, photographs, archival materials, and fine art, and its engaging programs, reflect stories of life, work, and play in the Adirondack Park and northern New York State. The 6.2 million acres of park form the basis of this museum's exhibits that focus on the rich history of the Adirondack region. A great scenic location with grand views of Blue Mountain Lake. All ages will enjoy the 20+ exhibit buildings with plenty of hands-on opportunities for kids.

Open daily from 10 a.m. to 5 p.m. Memorial Day through Columbus Day. Call for September hours.

17

### Spring Blossom Fiddle Jamboree

Town Hall  
State Route 30  
Long Lake, NY  
(518) 624-3077  
www.longlake-ny.com



The Annual Spring Blossom Fiddle Jamboree is held on the last Sunday in April. This exciting event draws fiddlers from all over Northern New York, Syracuse, Albany and even Vermont, Pennsylvania, Quebec and Ontario. In the past, the Jamboree has brought together fiddlers ranging in age from 8 to 84 and at all talent levels from the most dedicated amateur to past NYS Fiddle Champions.

Event held at the Long Lake Town Hall on route 30. Call for dates and times.

18

### Dillon Park

2150 State Route 30  
Long Lake, NY 12847  
(518) 524-6226  
www.johndillonpark.org



Dillon Park opens the natural landscape of the Adirondacks to everyone. The Park provides opportunities for an outdoor wilderness experience for people with disabilities through the installation of special adaptive facilities blended into a natural environment. This ADA Accessible site features specially designed fishing docks, natural trails, canoe and kayak docking, and nine lean-tos.

Open May 1 to September 30.

19

### The Wild Center

45 Museum Drive  
Tupper Lake, NY  
(518) 359-7800  
www.thewildcenter.org



Live animals surround you in the main hall where you can watch otters cavort, great fish swim above you and birds call across the exhibits. Enjoy trails, lectures and hands on activities to explore the living world with naturalist guides.

Hours: Summer & Fall: Memorial Day - Labor Day 10 a.m. - 6 p.m. Labor Day - October 31, 10 am - 5 pm. Call for Winter & Spring hours.

20

### Woodsmen Days

Municipal Park  
State Route 30  
Tupper Lake, NY  
518-359-9444  
www.woodsmendays.com



Lumberjacks have been a part of Tupper Lake's history for over a century. They have competed in woodsmen games in Tupper Lake for most of that time. The Woodsmen Days event was created in 1980 and each year, volunteers and members of the Association work to bring new and exciting competitions, displays and fun, to one of the Adirondack Region's largest summer spectacles.

Held July each year, two days.

21

### Adirondack Park Visitor Interpretive Center

8023 State Route 30  
Paul Smiths, NY  
(518) 327-3000  
www.adkvic.org



The VIC is located on a 2,885-acre preserve, admission is free. The VIC, a designated New York State Wildlife Viewing Site, includes a 60-acre marsh, ponds, brooks and swamps, significant glacial and geological features, Jenkins Mountain, scenic vistas, a theater, exhibit rooms, the Native Species Butterfly House, children's playground, interpretive and backcountry trails, and picnic pavilions. Staff will direct you to the native habitats of common loon, great blue heron, beaver, red fox, coyote, black bear, white-tailed deer, snowshoe hare, muskrat, moose and many species of birds.

Center open Tues. - Sat. 9 a.m. - 5 p.m. Trails open dawn to dusk daily.

22

### Underground Railroad Site

2 Clay Street  
Malone, NY  
(518) 483-2750  
www.franklinhistory.org



The First Congregational Church of Malone was built in 1883 constructed on the remains of a brick church foundation from 1851, the same year the Fugitive Slave Law was passed. The basement of the current church is largely a remnant of the earlier building, and includes tunnels and a formerly concealed room under the portico. Recognized by New York State as one of 24 sites designated as the Underground Railroad Heritage Trail.

23

### Malone's Architectural Heritage: A Walking Tour

Malone, NY  
(518) 483-2750  
www.franklinhistory.org



Take a "Steeple and Stones Walking Tour" [1.1 miles, flat] featuring stately churches and stone buildings. Tour starts downtown in Arsenal Green Park. Or go house hunting on the "Beautiful Homes of Malone Tour" [1.7 miles, flat] which begins at the corner of Arsenal Green Park and showcases many beautiful Victorian-era homes.

Use the number listed above to contact the Franklin County Historical and Museum Society for a tour map.



24

### **Almanzo Wilder Homestead**

177 Stacy Road  
Burke, NY  
1-866-438-3276  
www.almanzowilder  
farm.com



The Wilder Homestead was the boyhood home of Almanzo Wilder. The site features the original house introduced in the series of Little House books written by his wife, Laura Ingalls Wilder. Her husband's memory of his childhood in this home became the story of "Farmer Boy," the second in the series. Tours and workshops showcase the many aspects of life on a farm, including crafts, agriculture and festivals. During the season, the Homestead provides many programs and activities geared toward families and children.

Open late May to the end of September; Mon. – Sat. 11 a.m. – 4 p.m. Sun. 1 p.m. – 4 p.m.

25

### **Salmon River**

Malone area  
NYS DEC Region 5 Fisheries  
(518) 897-1333  
[http://www.dec.ny.gov/  
outdoor/38324.html](http://www.dec.ny.gov/outdoor/38324.html)

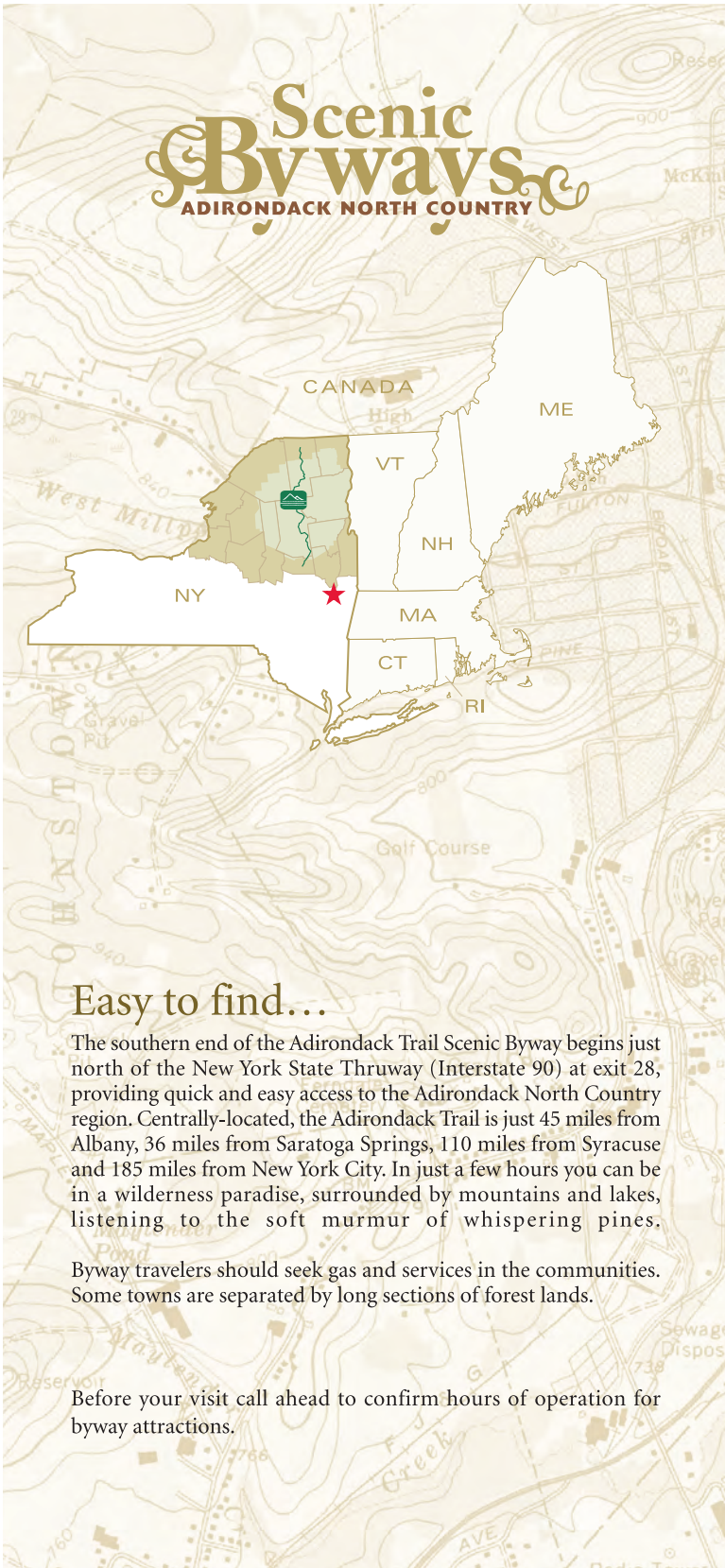


Noted for its outstanding brown trout and rainbow trout fishing opportunities, the river first approaches the Scenic Byway south of Chasm Falls and travels through the Town of Malone before continuing north to the Canadian border.

For more information contact the NYS Department of Environmental Conservation.

# Scenic Byways

ADIRONDACK NORTH COUNTRY



## Easy to find...

The southern end of the Adirondack Trail Scenic Byway begins just north of the New York State Thruway (Interstate 90) at exit 28, providing quick and easy access to the Adirondack North Country region. Centrally-located, the Adirondack Trail is just 45 miles from Albany, 36 miles from Saratoga Springs, 110 miles from Syracuse and 185 miles from New York City. In just a few hours you can be in a wilderness paradise, surrounded by mountains and lakes, listening to the soft murmur of whispering pines.

Byway travelers should seek gas and services in the communities. Some towns are separated by long sections of forest lands.

Before your visit call ahead to confirm hours of operation for byway attractions.

## Visitor Information

**Adirondacks Speculator Region Chamber of Commerce**  
Route 30 & Route 8  
Speculator, NY 12164  
(518) 548-4521  
info@speculatorchamber.com  
www.speculatorchamber.com

**Indian Lake Chamber of Commerce**  
Route 30  
Indian Lake, NY 12842  
(800) 328-5253  
info@indian-lake.com  
www.indian-lake.com

**Tupper Lake Chamber of Commerce**  
121 Park Street  
Tupper Lake, NY 12986  
(518) 359-3328  
visittupper@tupperlakeinfo.com  
www.tupperlakeinfo.com

**Adirondack Park Visitor Interpretive Center**  
NYS Route 30  
Paul Smiths, NY 12970  
(518) 327-3000  
www.adkvic.org/  
paulsmiths.html

**Malone Chamber of Commerce**  
497 East Main Street  
Malone, NY 12953  
(877) 625-6631  
director@visitmalone.com  
www.visitmalone.com

### COUNTY & REGIONAL TOURISM

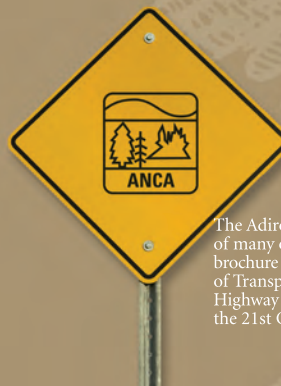
**Adirondack Regional Tourism Council**  
Info Center  
Between Exit 41 and Exit 40  
on I-87 South  
Beekmantown, NY  
(800) 487-6867  
info@adk.com  
www.visitadirondacks.com

**Montgomery County Chamber of Commerce**  
12 South Bridge Street  
Fonda, NY 12068  
(800) 743-7337  
tourism@montgomerycountyny.com  
www.visitmontgomerycountyny.com

**Fulton County Regional Chamber of Commerce**  
2 North Main Street  
Gloversville, NY 12078  
(800) 676-3858  
info@44lakes.com  
www.44lakes.com

**Hamilton County Department of Economic Development & Tourism**  
South Shore Road  
Lake Pleasant, NY 12108  
(800) 648-5239  
info@hamiltoncounty.com  
www.hamiltoncounty.com

**Franklin County Tourism**  
10 Elm Street, Suite 2  
Malone, NY 12953  
(800) 709-4895  
info@adirondacklakes.org  
www.adirondacklakes.org



The Adirondack North Country Association is a proud sponsor of many of the Adirondack North Country Scenic Byways. This brochure was funded by a grant to the New York State Department of Transportation's Scenic Byways program through the Federal Highway Administration and the Transportation Equity Act for the 21st Century.